

BERLIN



The BERLIN design is one of our most popular floorplans.

Maximise your living space with this large open plan layout.

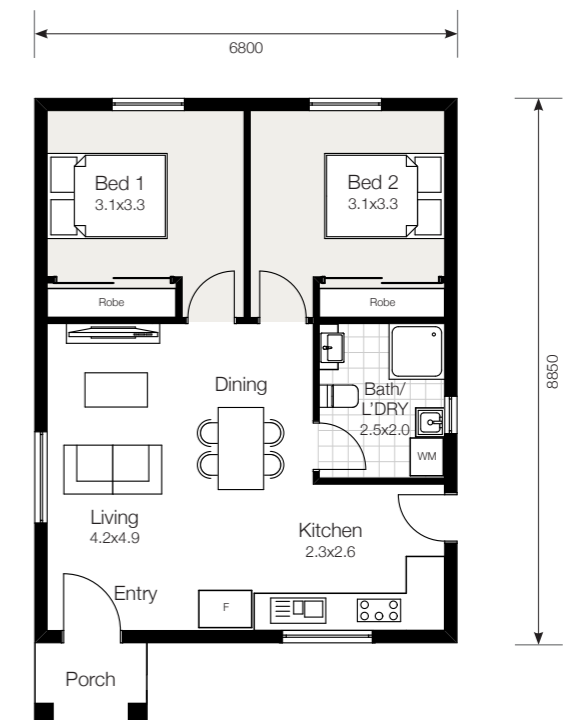
Our fully flexible floorplan means you can add an alfresco area to enjoy entertaining or outdoor cooking.

60m²

2 | 1 | 1

House width 6.80m
House depth 8.85m
Total size 60m²

Kitchen 2.3m x 2.6m
 Living 4.2m x 4.9m
 Bedroom 1 3.1m x 3.3m
 Bedroom 2 3.1m x 3.3m
 Bath/L'dry 2.5m x 2.0m



BRICKWOOD
HOMES

GRANNY FLAT *Design Collection*