

# MILAN



## The MILAN is a perfect option for families looking for open-plan living

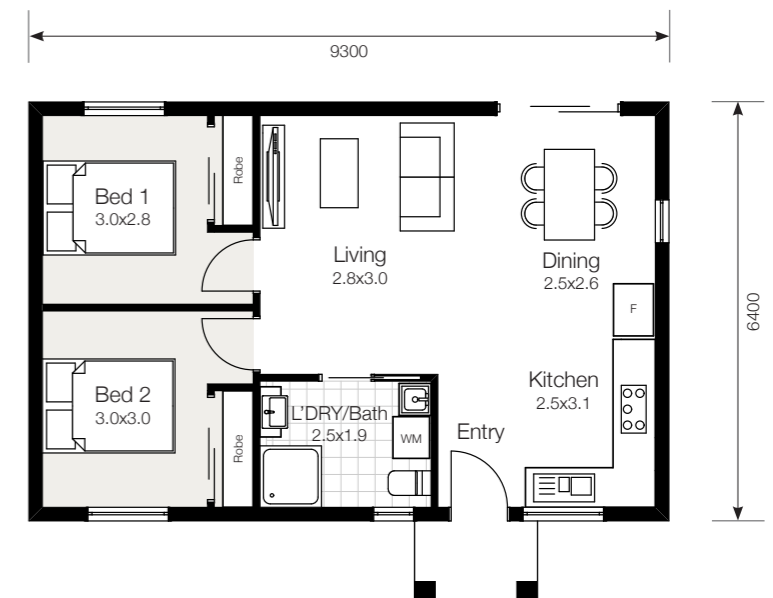
The base floorplan offers a functional L shaped kitchen and extra large living areas. Included in the upgrade design is a similar L shaped kitchen allowing for breakfast bar seating and a hidden study or extra pantry storage space. This design radiates cosmopolitan living.

### 60m<sup>2</sup>

2 | 1 | 1

**House width** 9.30m  
**House depth** 6.40m  
**Total size** 60m<sup>2</sup>

Kitchen 2.5m x 3.1m  
 Living 2.8m x 3.0m  
 Dining 2.5m x 2.6m  
 Bedroom 1 2.8m x 3.0m  
 Bedroom 2 3.0m x 3.0m  
 Bath/L'dry 2.5m x 1.9m



**BRICKWOOD**  
 HOMES

GRANNY FLAT *Design Collection*