

TOKYO



The TOKYO granny flat design is ideal for buyers seeking open-plan living.

It features two bedrooms with built-in robes and generous living spaces at the other end of the home.

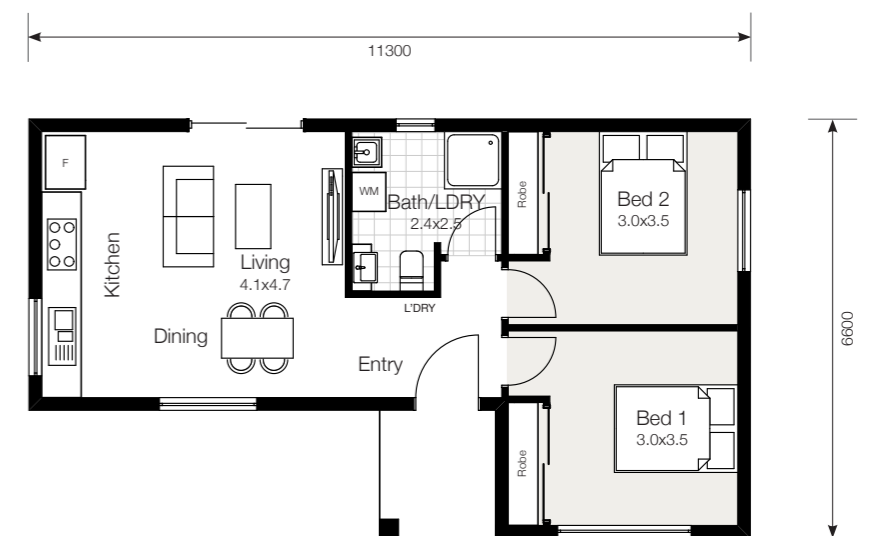
The upgraded version offers a larger porch extension to elevate the entertainment capacity of your new space.

60m²

2 | 1 | 1

House width 6.80m
House depth 8.85m
Total size **60m²**

Living 4.1m x 4.7m
 Bedroom 1 3.0m x 3.5m
 Bedroom 2 3.0m x 3.5m
 Bath/L'dry 2.4m x 2.5m



GRANNY FLAT *Design Collection*